

BIM.**archiproducts**[®]

modbar[™]
modular brewing systems

MODBAR BIM PRODUCTS - CONTENT AND USER MANUAL

Authoring Software Autodesk Revit 2017

This document provides information on the content and the correct use of the BIM files in Revit format produced by MODBAR.

File name and definition

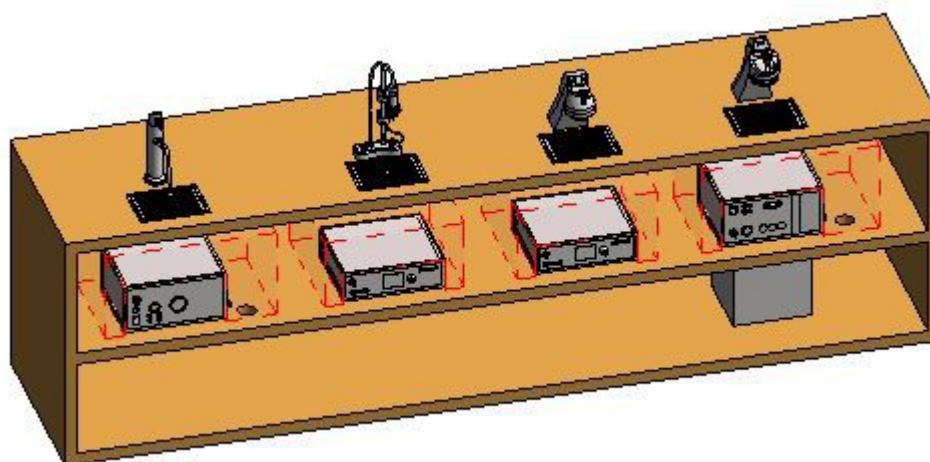
The BIM product is contained in the .rfa format file "LA-MARZOCCO_MODBAR_Product Name"; the native file is created with the BIM authoring software Autodesk Revit 2017.

In addition to the object file, the company's information sheet (schedule) is provided in a demo file. The information sheet, in .rvt format, contains information regarding the MODBAR product. This can be used to calculate the quantities and verify the characteristics of the product with regard to aesthetics, dimensions, physical appearance and performance.

The information sheet has been divided in four categories: **Identity data** (manufacturer; model; description; product sheet; technical sheet; URL), **Dimensions** (height; width; depth), **Electrical parameters** (voltage, wattage, connection), **Plumbing parameters** (cold water pipe, drain connection).

Other alphanumeric information about the product can be found in the Object's Properties Palette.

The designer/manufacturer who uses the MODBAR BIM content can calculate the quantities of the products used in his/her project, manage the quantities for the purchase order and transfer the information relating to the product used to those carrying out the work.

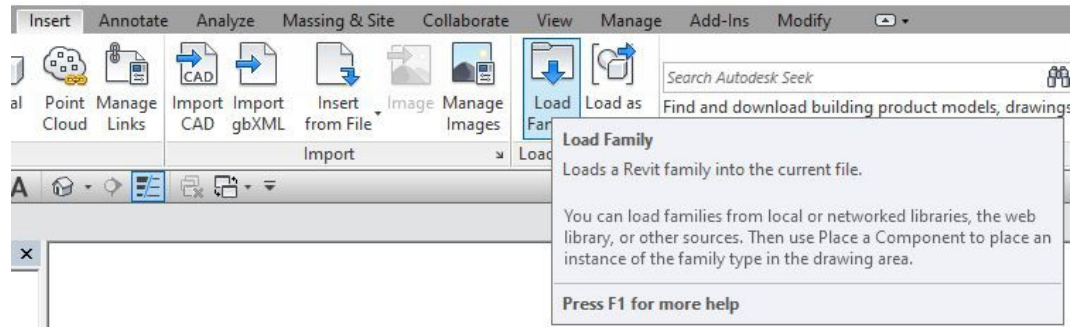


The product shown in this user guide is used as an example.

How to use MODBAR BIM content

Download and save the MODBAR .rfa objects in your personal library, then upload the BIM family to your project.

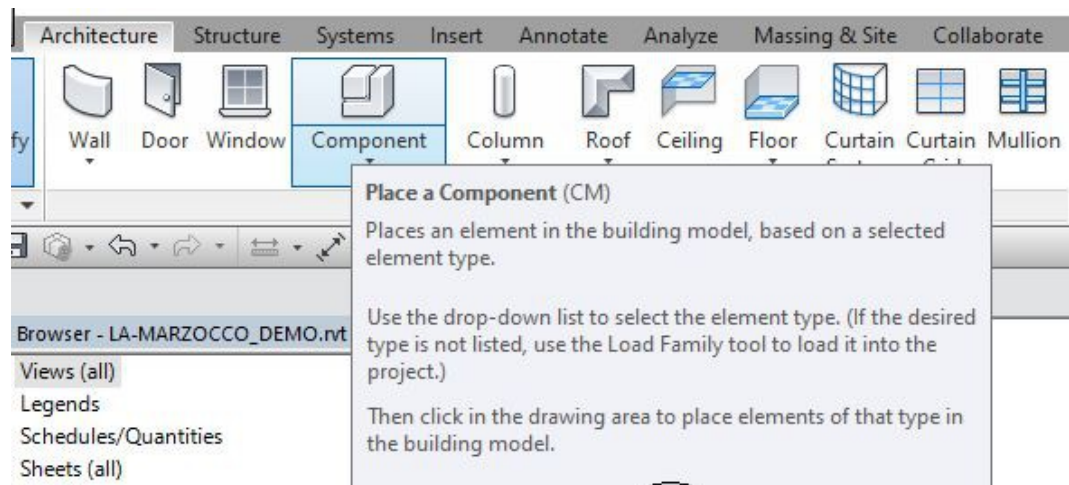
Load Family



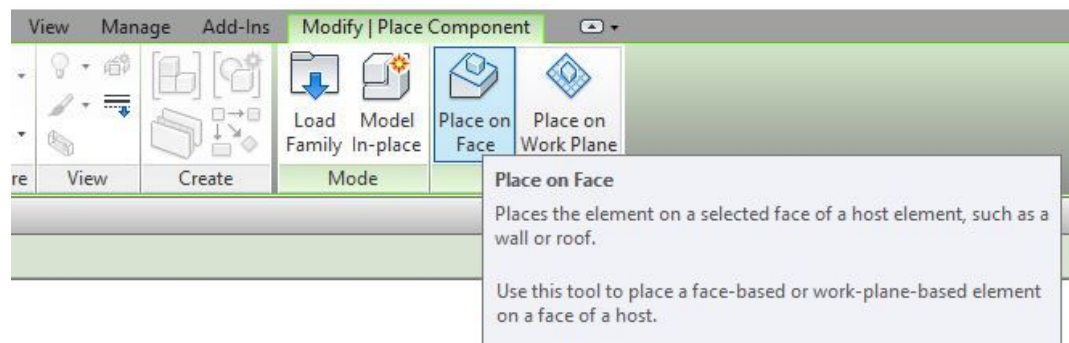
Component positioning

Open any plan view and insert the desired MODBAR product using the Component command → *Place a component* and position it within the project with → *Place on Face*.

Place a component



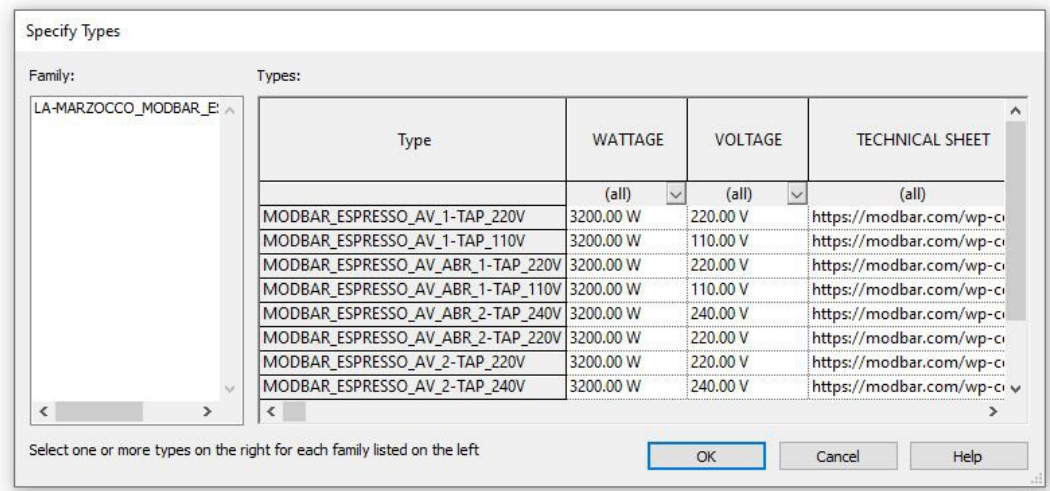
Place on Face



If you find a .txt file in the download file, archive it in the same location as the .rfa file.

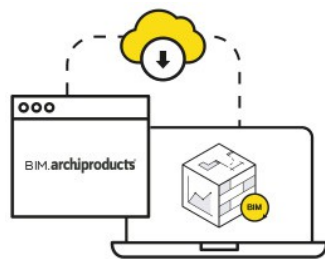
The .txt file contains the parameters and the respective values used to create the different types of a given family.

The .txt file includes the type catalogue. By using the type catalogue, it is possible to select and load only the desired types for your personal project, thus slimming down the project file.



Type catalogue

Refer to the technical parameters sheet for help when choosing the correct product.



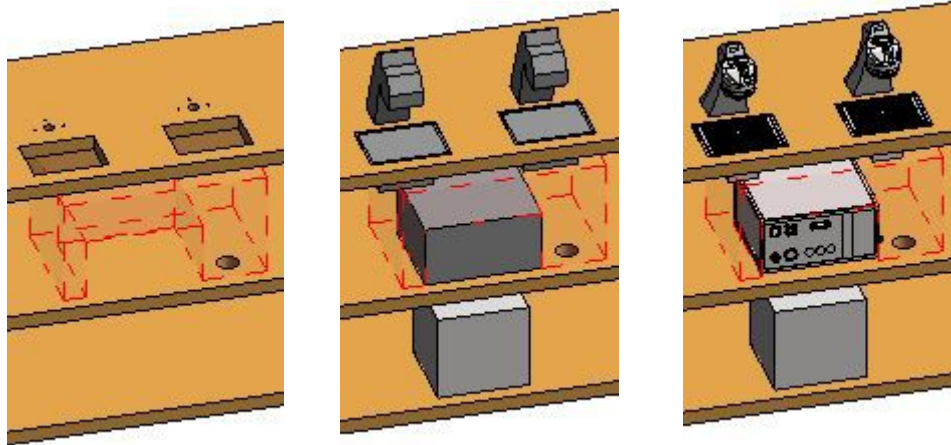
Now you can connect our database with your project: search and insert the best building and design products, use and manage them through my library and keep them updated through automatic notifications directly from Revit.

<https://bim.archiproducts.com/en/revit-plugin-in>

Level Of Geometry (LOG)

The object was created with three levels of geometric development visible in plan, elevation and section. In the **Coarse** level view, the cutting template can be seen; the **Medium** level shows the overall geometric footprint; the **Fine** level shows the simplified 3D model of the product with fewer details.

LOG representation



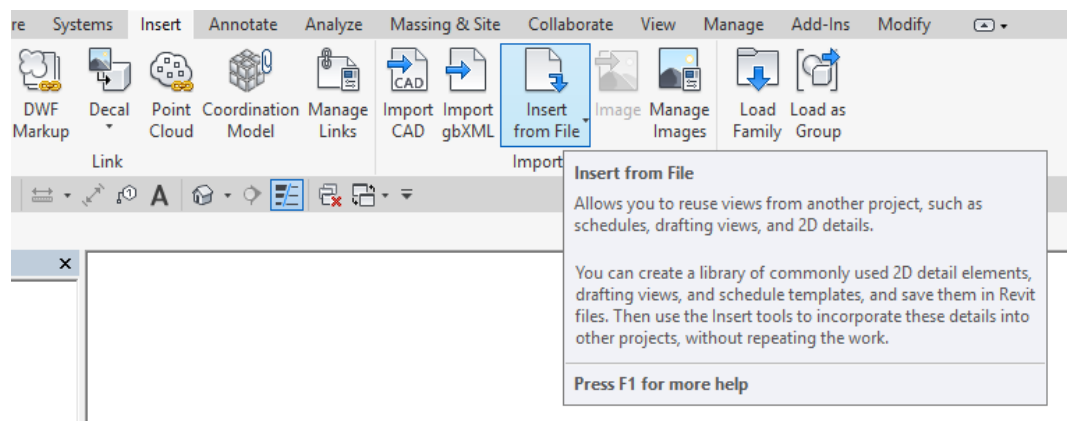
Schedule entry

In addition to the object file, the company's information sheet (schedule) is provided in the demo file LA-MARZOCCO_MODBAR_DEMO.

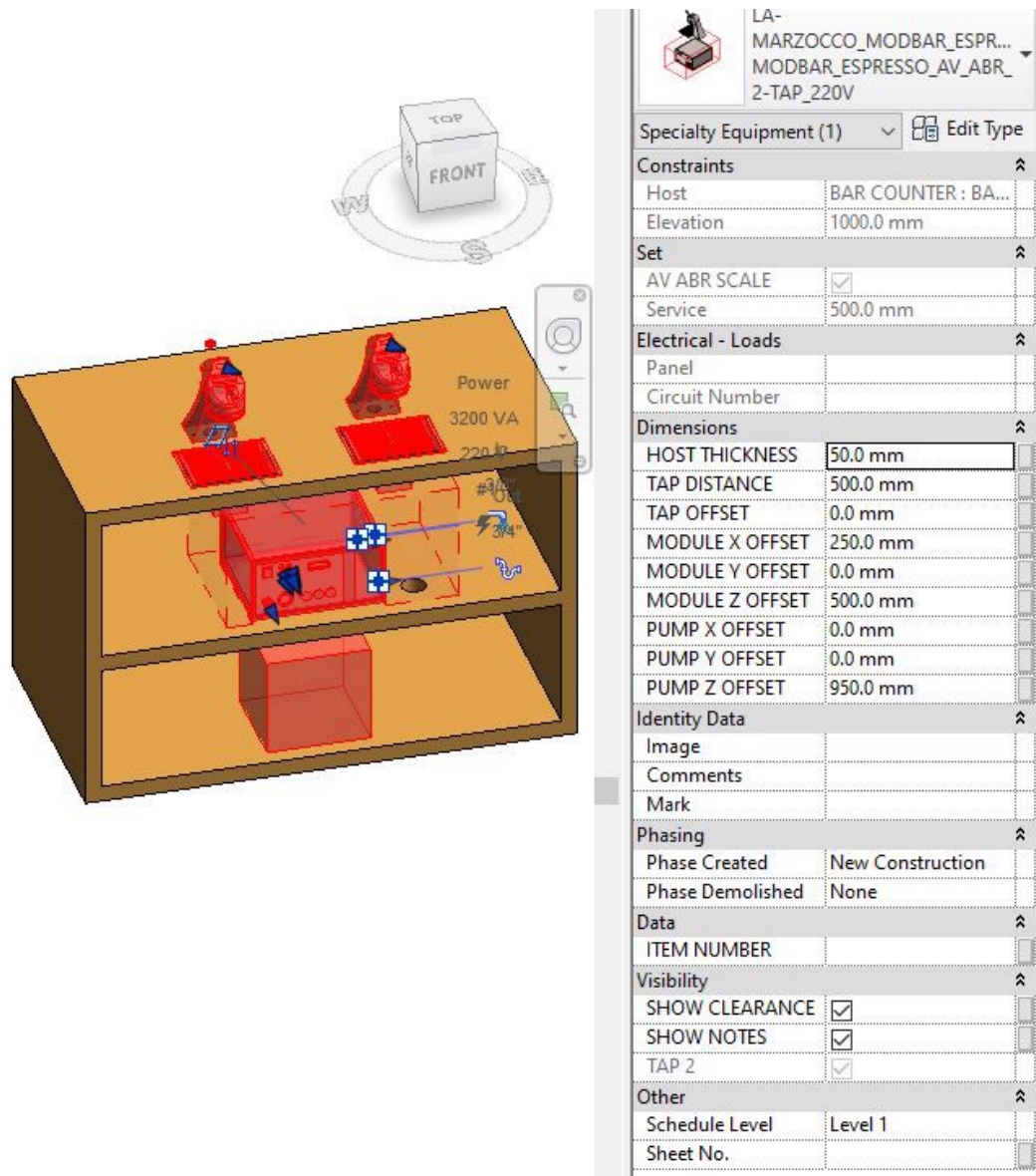
The information sheet contains information in .rvt format about the products, including the identity, dimensional and technical parameters, which can be used to calculate the quantities and verify the product's physical and performance features.

When using the BIM content, designers and manufacturers can calculate product quantities to be used in their projects, manage the quantities to be ordered and share the product information to those carrying out the work.

Load schedule



Instance parameters



With the instance parameters it is possible to manage the position of the **module** in the plane (X and Y offset) and its height (Z offset, indicates the distance between the two host surfaces of tap and module). It is also possible to manage the position of **tap 2** and **pump** when they are provided. Finally, the clearance and notes visible in the plan can be turned on and off.

In some cases it is also necessary to enter the value of the host thickness parameter referred to the counter top.

It is important to respect all the indications concerning the clearance of the module, the cutting of the counter top, the electrical connectors and the pipes.

Write us at infobim@bimarchiproducts.com
or call at +39 080-2460421



bim.archiproducts.com

THE ARCHITECTURE
& DESIGN NETWORK

—
archipassport

edilportale® **archiportale®** **archiproducts®** **BIM.archiproducts®** **archilovers®** **© sayduck**

Archipassport | Edilportale | Archiportale | Archiproducts | BIM.archiproducts | Archilovers sono marchi registrati da Edilportale.com Spa © copyright 2018
Edilportale.com Spa | Via Loiacono, 20 - 70126 Bari, Italia - tel. +39 080 24 60 421 | fax +39 080 99 95 130